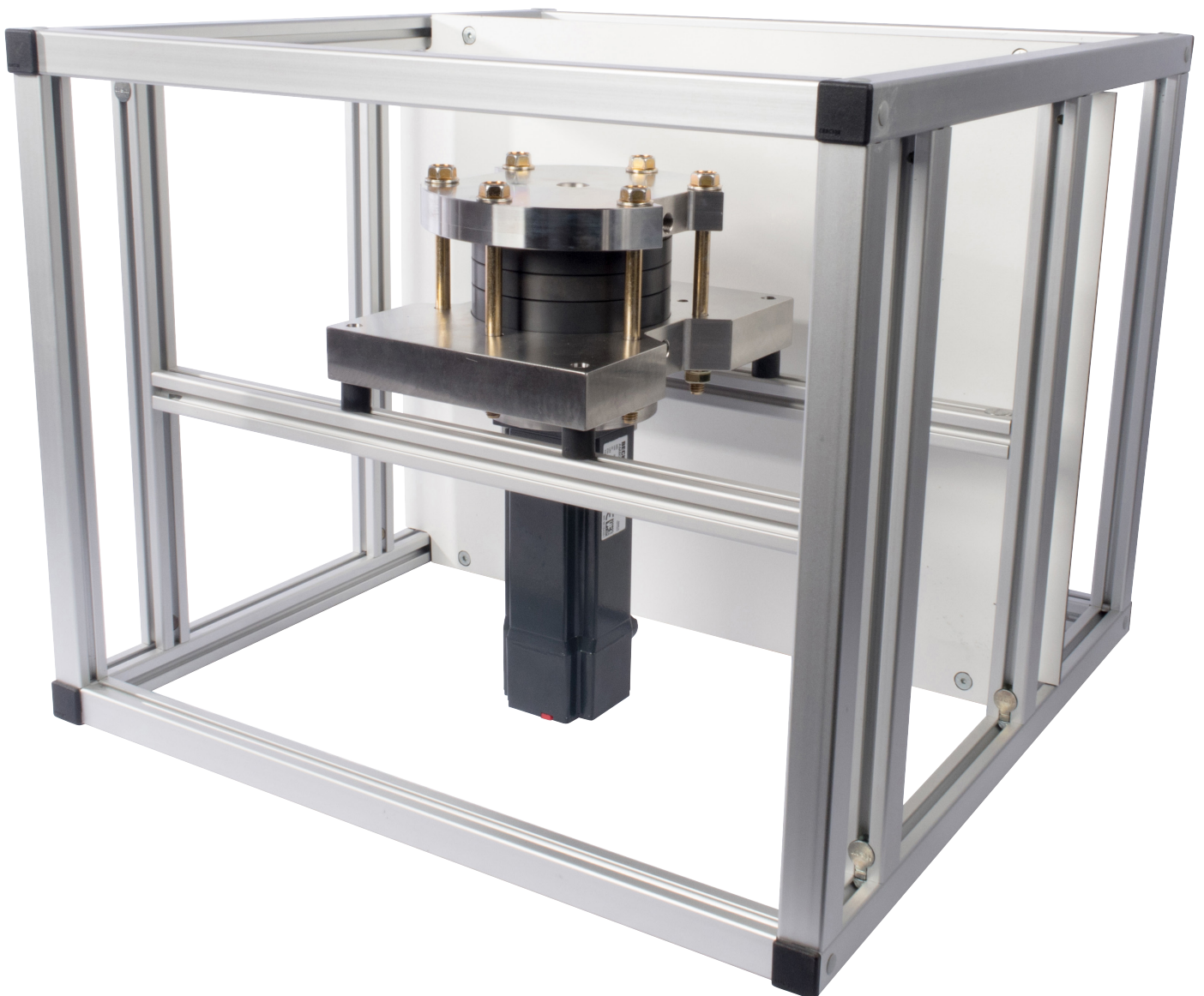
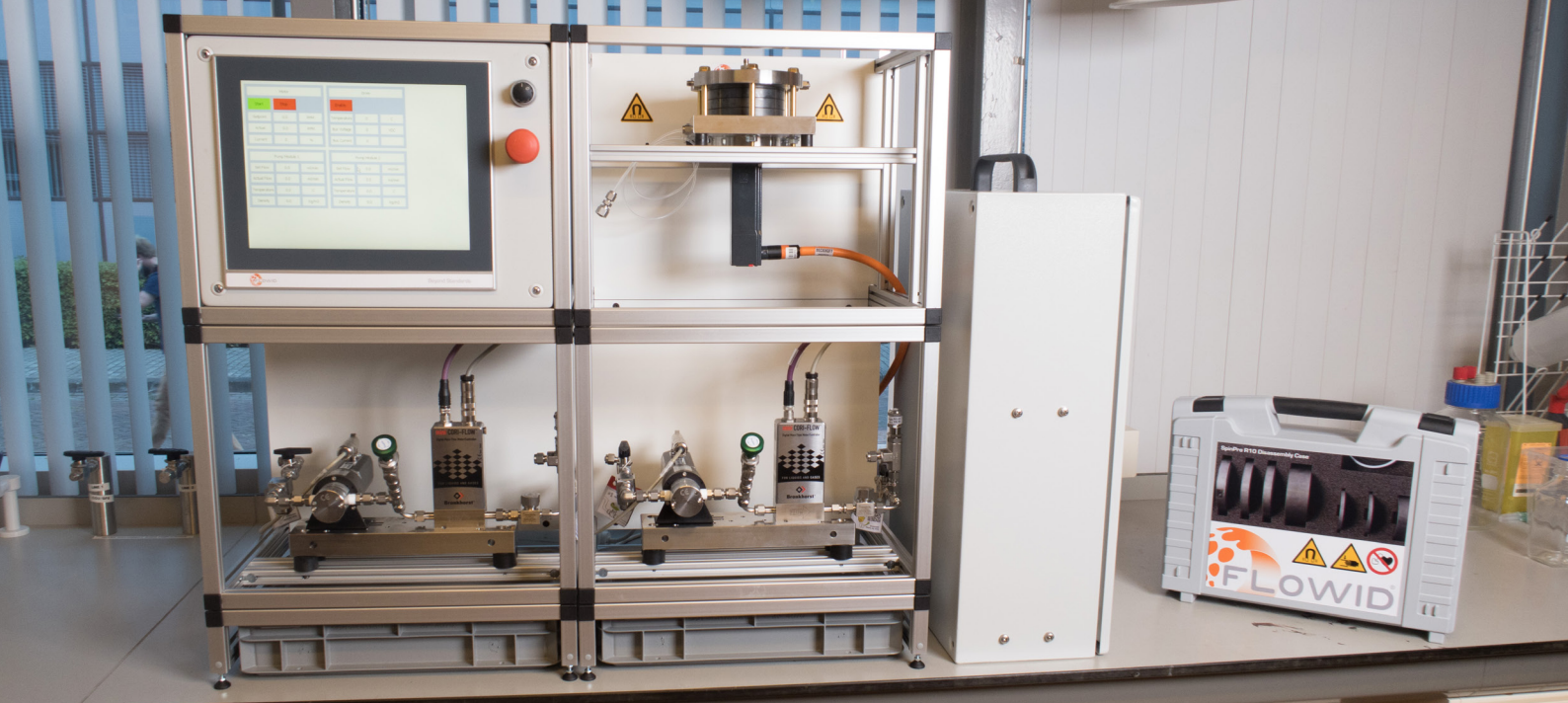




## SpinPro R10





# SpinPro R10 Reactor

## Contact

Flowid B.V.  
Wouter Stam

+31 40 3046 279  
+31 62 467 9774  
wouter.stam@flowid.nl

Achtseweg Zuid 151  
5651 GW Eindhoven  
The Netherlands

PO Box 2272  
5500 BG Veldhoven  
The Netherlands

## SpinPro R10 Reactor

The SpinPro R10 is a continuous three-stage reactor, based on the SpinPro technology that allows chemical reactions to take place in seconds in a highly controlled and safe manner. Process intensified conditions result in highly efficient use of energy and resources as well as improved quality and flexibility. The SpinPro R10 is designed for fast and exothermic chemical reactions of gasses, miscible and immiscible fluids. The SpinPro R10 is able to intensify the process by using elevated temperatures and pressures, combined with enhanced mass and heat transfer compared to conventional reactor technologies.

## SpinPro R10 Reactor Specifications

- Throughput: up to 70 LPH
- Pressure: up to 10 Bar
- Temperature: -20 to 160°C
- Reactor volume: 3 stages in total 19 mL
- Wetted surfaces: silicon carbide
- Control over mixing intensity up to 8000 RPM

## Options

- Integration with FlowFlex pumping modules
- Pressure and Temperature transmitters

